

PLATE 1. LANDSAT image of Sudbury's industrial barrens (blue-gray area). Satellite image recorded July 25, 1987.



PLATE 2. A 1979 picture of the 2286-m long O'Donnell roast yard that operated from 1916 to 1929. (Photo by W. McIlveen.)

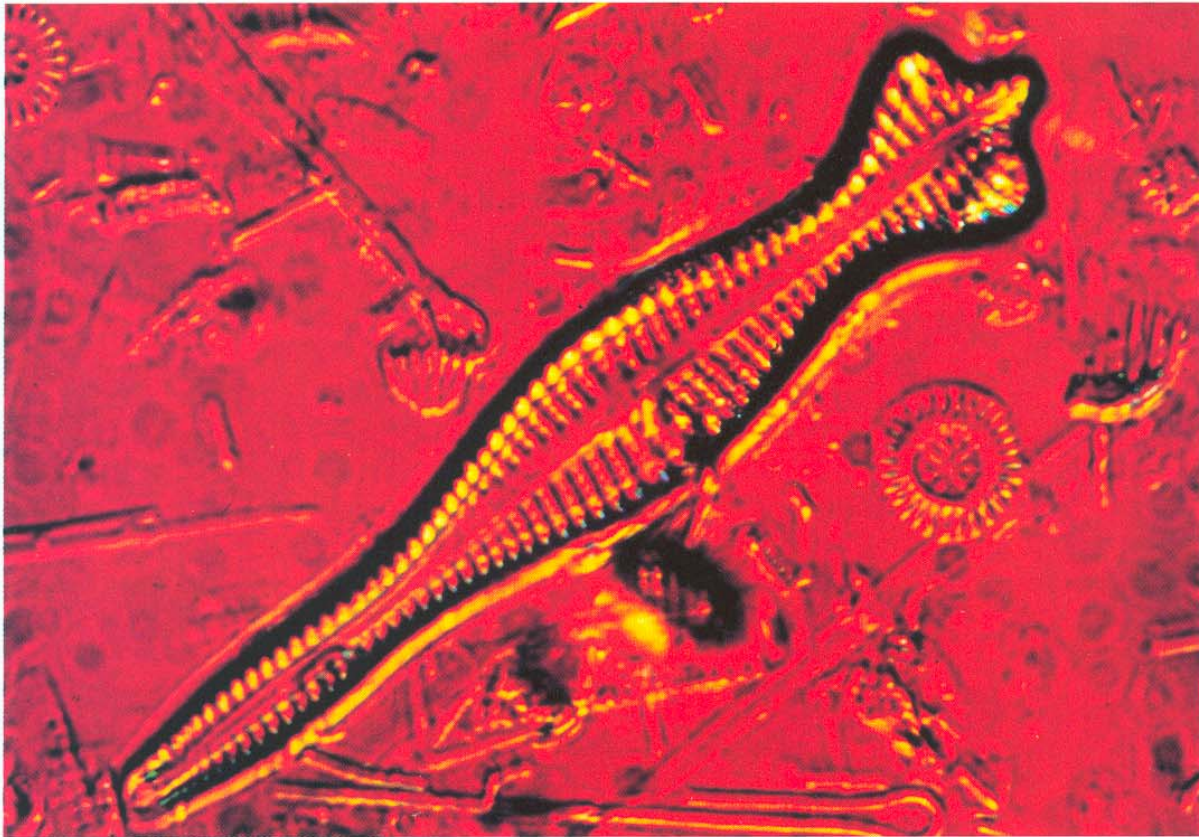


PLATE 3. Microfossils of diatoms from lake sediments. (Photo courtesy of J. Smol.)

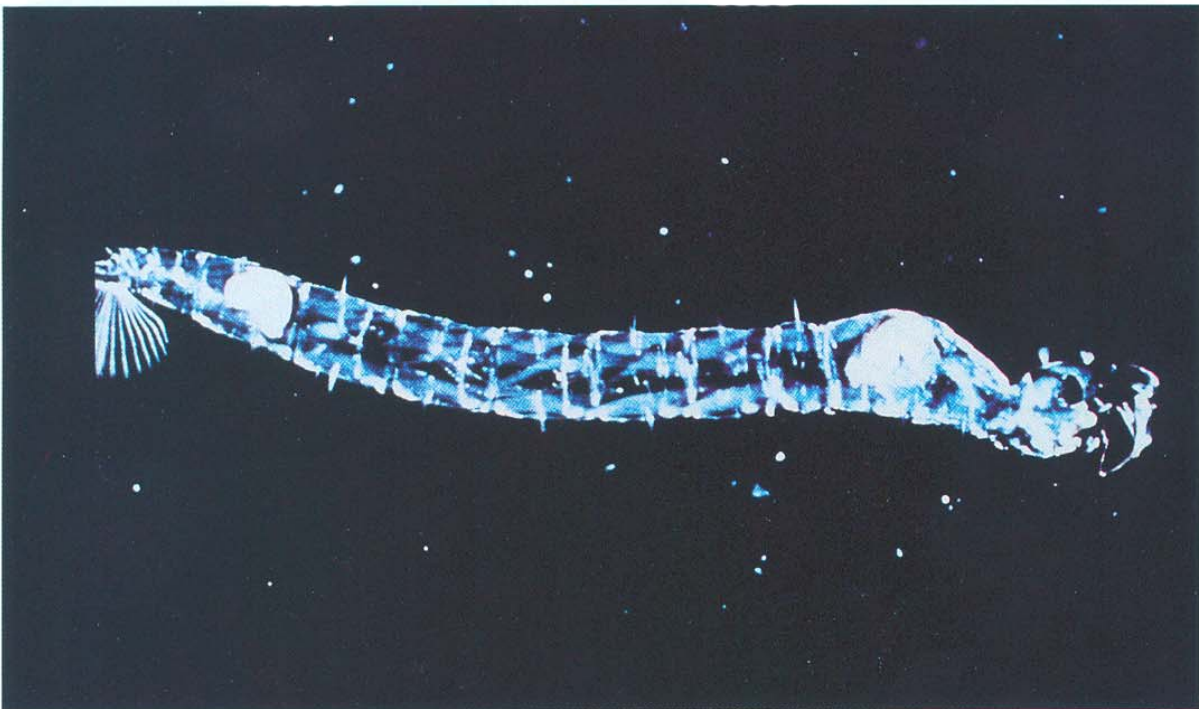


PLATE 4. *Chaoborus* larvae. (Photo courtesy of A.Uutala.)



PLATE 5. Sulfur dioxide injury to white pine. (Photo by P. McGovern.)



PLATE 6. Sulfur dioxide injury to white birch. (Photo by J. Negusanti.)

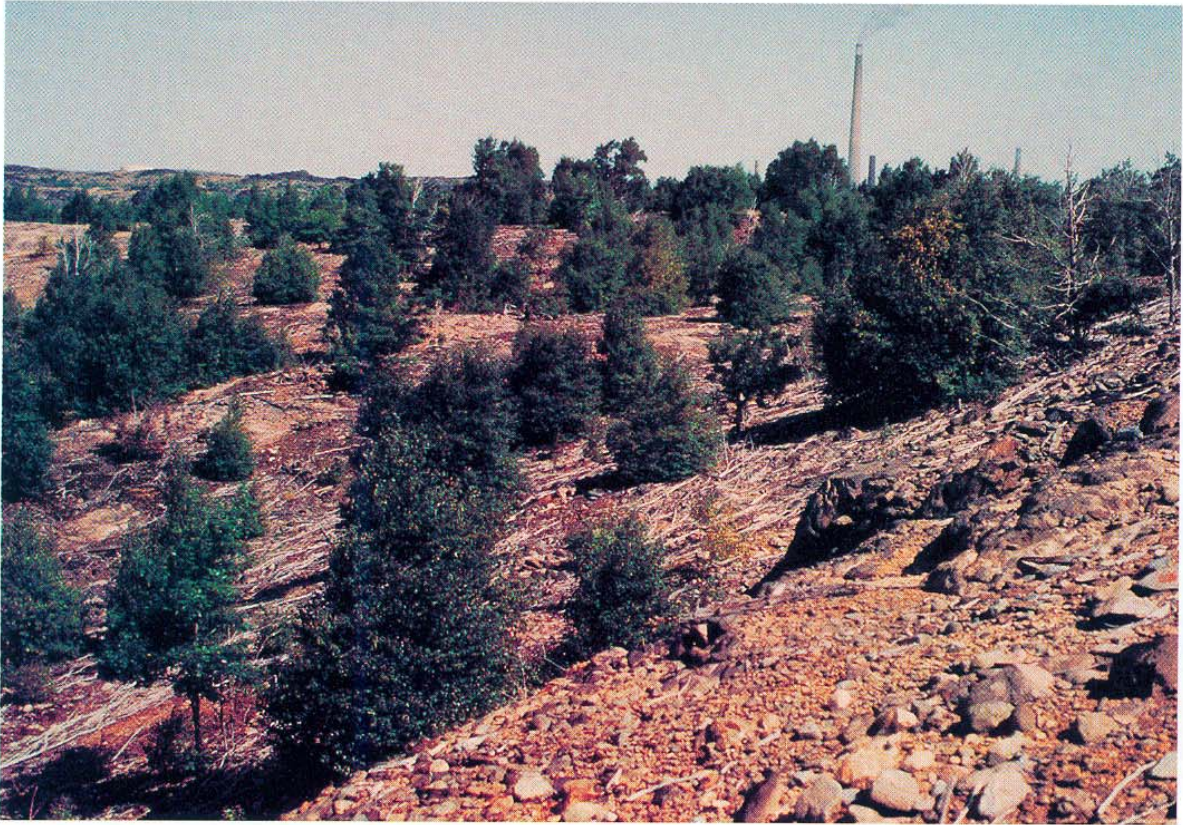


PLATE 7. Coppiced birch forest. (Photo by K. Winterhalder.)



PLATE 8. A fruticose lichen, an indicator of improving air quality. (Photo by J. Gunn.)

PLATES 9–11. Revegetation of the Cambrian Heights site in Sudbury. (Photos by K. Winterhalder.)

July 29, 1981



May 20, 1982



July 6, 1988



PLATE 12. Aurora trout lakes 110 km north of Sudbury. (Photo by E. Snucins.)



PLATE 13. Pouring slag. (Photo by B. Chambers.)

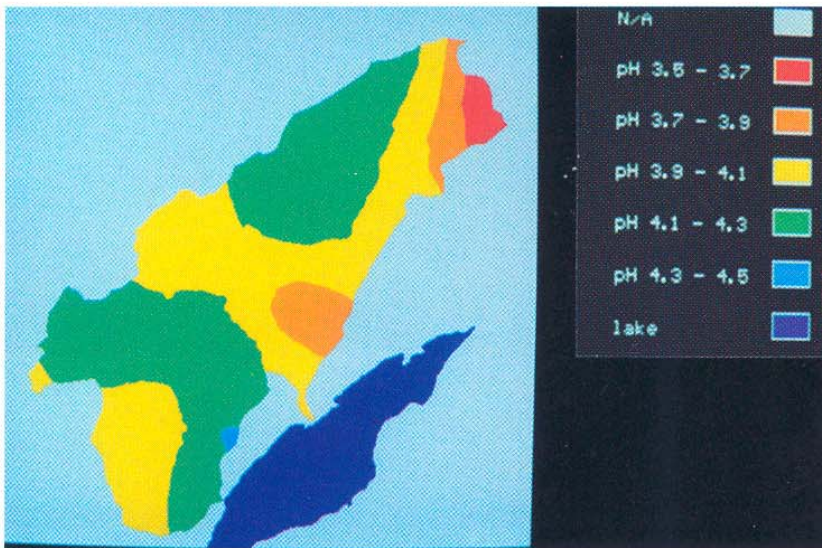


PLATE 14. Soil pH for two sub-watersheds at Daisy Lake. (Photo by A. Gallie.)

PLATE 15. Male aurora trout in spawning colors. (Photo by E. Snucins.)

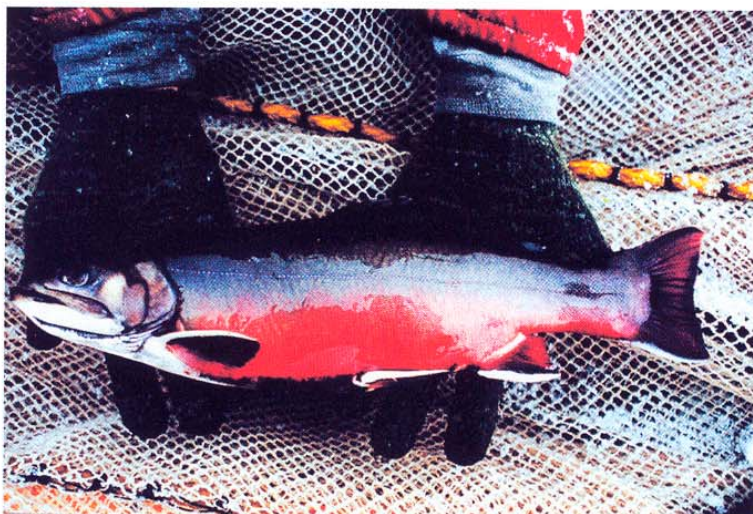


PLATE 16. Tailings disposal. (Photo by K. Winterhalder.)



PLATE 17. Soil pH draped over topography at Daisy Lake sub-watersheds. (Photo by A. Gallie.)

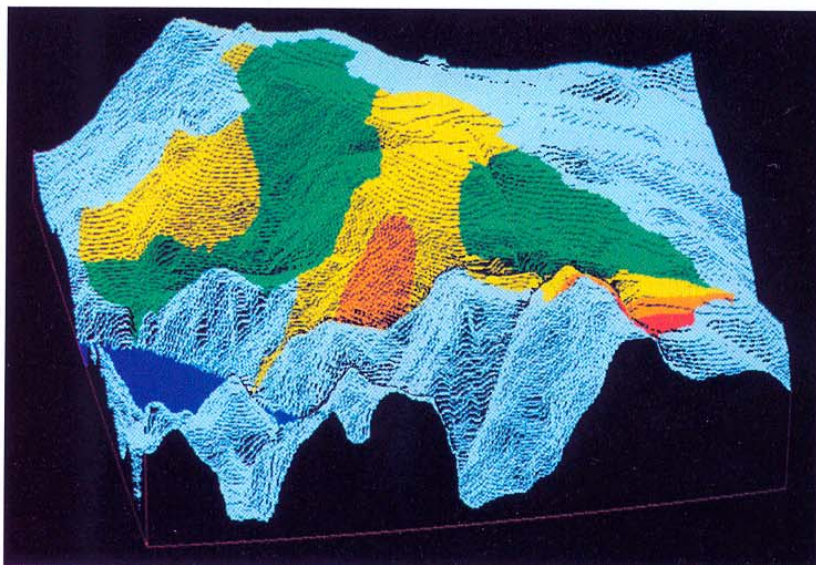




PLATE 18. Aerial view of downtown Sudbury.